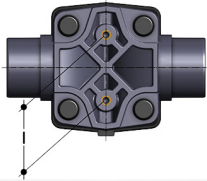
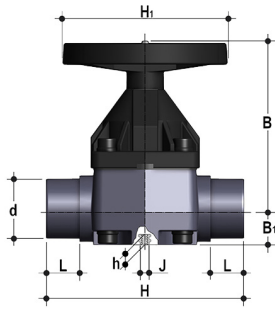


DIMENSIONS

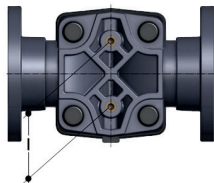
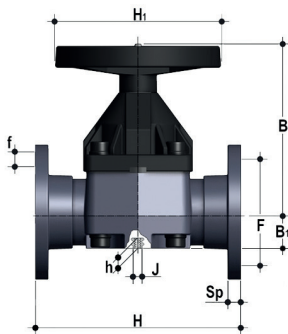


VMDF

Diaphragm valve with male ends for socket welding, metric series

d	DN	PN	B	B ₁	H	H ₁	h	l	J	L	g	EPDM code	FKM code	PTFE code
90	80	*10	225	55	300	200	23	100	M12	51	7840	VMDF090E	VMDF090F	VMDF090P
110	100	*10	295	69	340	250	23	120	M12	61	11670	VMDF110E	VMDF110F	VMDF110P

*PTFE PN6

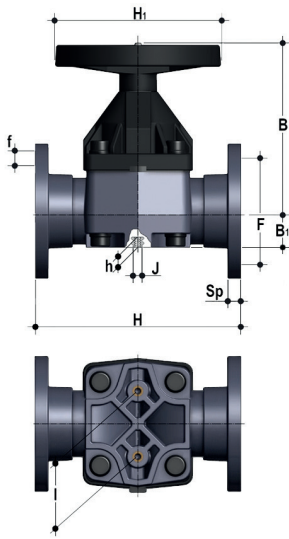


VMOF

Diaphragm valve with flanged monolithic body, drilled EN/ISO/DIN PN10/16. Face to face according to EN 558-1

d	DN	PN	B	B ₁	F	f	H	H ₁	l	J	Sp	U	g	EPDM code	FKM code	PTFE code
90	80	*10	225	64	160	18	310	200	100	M12	22	8	10020	VMOF090E	VMOF090F	VMOF090P
110	100	*10	295	72	180	18	350	250	120	M12	23	8	14290	VMOF110E	VMOF110F	VMOF110P

*PTFE PN6



VMOAF

Diaphragm valve with flanged monolithic body, drilled ANSI B16.5 cl.150 #FF

d	DN	B	B ₁	F	f	H	H ₁	I	J	Sp	U	g	EPDM code	FKM code	PTFE code
3"	80	225	64	152,4	19,1	263	200	100	M12	22	4	10020	VMOAF300E	VMOAF300F	VMOAF300P
4"	100	295	72	190,5	19,1	328	250	120	M12	23	8	14290	VMOAF400E	VMOAF400F	VMOAF400P

*PTFE: PN 6

For installation prior to october 2017 please contact Fip Technical Support